

IN THE GRAY WING

California Sculpture SLAM

September 25 to November 15, 2015

The Central Coast Sculptor Group presents its third biennial *California Sculpture SLAM*, a juried exhibition of contemporary fine sculpture by California artists.

California Sculpture SLAM is a unique opportunity to see current works by both established and emerging sculptors on the West Coast scene. This year's call for entries, without adherence to strict thematic guidelines, has inspired an extraordinary collection of sculpture, nearly doubling the number of artist entries from the inaugural *California Sculpture SLAM* in 2011. Ranging from pedestal, to freestanding, to wall-mounted pieces, the 24 works in the exhibition were selected from 201 artists and include designs crafted of metal, wood, stone, glass, and fabric. The selected artists come from all over the state. Representing the Central Coast are sculptors Isaac Lewin of San Luis Obispo, Patrick Mehaffy of Los Osos, Kevin Porter of Shell Beach, and Robert Schuerman of Paso Robles. This year's juror is Bella Feldman, an Oakland based sculptor. A number of her sculptures will be on view during *SLAM*. Her work was recently celebrated in a 50 year retrospective at the Richmond Art Center. She juxtaposes the strength of steel with the fragility of glass, creating large and small-scale sculptures that draw upon themes from her own life experiences—the Depression, the Holocaust, and too many wars.

A reception and award ceremony with the artists and juror will take place on Saturday, September 26 from 3:30–5:30 pm. ♦



Courtney Brown, *Self Organization*

Re-imagined Landscapes Through September 20

Phoebe Brunner: El Cielito



Phoebe Brunner, *Blue Marsh* (detail)

Tapping into a visual reservoir of memories of California as well as field notes, photos, and thumbnail sketches, Santa Barbara artist Phoebe Brunner creates boldly beautiful, non-traditional landscape paintings of the Central Coast and the American West. *El Cielito* is an exhibition of these reconceived landscapes that seem simultaneously real and surreal. Through

the interplay of light and space, unorthodox colors, and patterns and movement, a symbolic narrative with a mystical presence arises, inviting the viewers to experience their surroundings from a new perspective. ♦

Carol Paquet: The Ground Beneath My Feet



Carol Paquet, *Underfoot*

Carol Paquet's primary interest in her painting and photographic work is finding irony in situations and landscapes around her. The recurring element throughout *The Ground Beneath My Feet* is the discarded plastic bag, through which Ms. Paquet opens a visual conversation about the discord between the natural world and industry. Oftentimes the plastic adopts an anthropomorphic character, representing much more for

her than a simple quotidian object: it is a vessel for memory and a fleeting capsule of time. By immersing herself in the visual world of random and found trash, Ms. Paquet has discovered the myriad patterns, lights and nuances of the minutiae. ♦

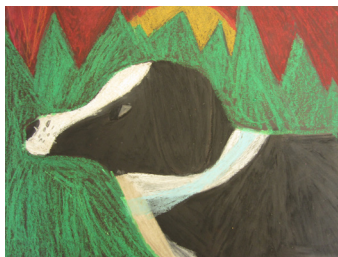
Members-only opportunity to tour *California Sculpture SLAM* on Friday, October 2 at 5 pm before Art After Dark, 6 to 9 pm open to the public. Special thanks to Realtors Sandra Lee and Diane Moroski for their sponsorship of Art After Dark and to Hearthstone Winery for providing complimentary wine at the event.

FIRST GALLERY & NYBAK WING

Kids' Eye View

Up To September 20

Honoring the creativity and artistic prowess of the younger members of our community, *Kids' Eye View* showcases artwork created during SLOMA's 2015 youth summer art camps. During 6 week-long sessions, 180 campers—from 5-year-olds to teens—enjoyed “brains-on” art classes taught by talented and inspiring teaching artists. A closing reception to celebrate the young artists will take place Sunday, September 20, 2–4 pm. ♦



Ivy Scott, age 9

McMEEN GALLERY

Twila Stofer's Artful Eye

September 4 to September 27

The Central Coast Photographic Society presents *Twila Stofer's Artful Eye*, a compilation of 35mm photographs taken over the artist's more than 40 years as a freelance photographer. Ms. Stofer has been photographing the world since acquiring her first Nikon in the 1970s. Though she began by working in black and white, she moved early on to color slide film and continues to this day to work in 35mm format. She is fascinated by light, color, and form, and enjoys making photographs out of ordinary objects—rendered extraordinary by their placement, juxtaposition, or context.



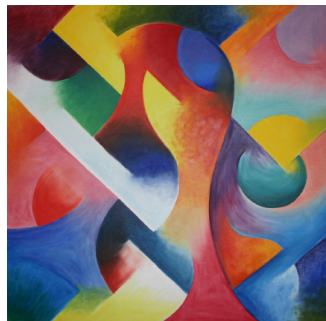
Twila Stofer, *Starry Night*

A reception and opportunity to meet the artist will take place on Friday, September 4 from 6–9 pm at Art After Dark. ♦

Rhythm and Hues

October 2 to November 29

The Painter's Group presents *Rhythm and Hues*, a juried exhibition of paintings inspired by its title.



Robert Dodge,
Duck with Yarmulke

The exhibition juror, Tera Galanti, grew up in Southern California and studied art at California State University, Long Beach where she earned her MFA in 1995. Since then, she has been actively producing and showing her work in numerous regional, national, and international venues. Ms. Galanti moved to California's Central Coast in 1998 to teach at Cuesta College and Cal Poly. She is

currently an associate professor in the Department of Art & Design at Cal Poly.

A reception and opportunity to meet the artists will take place on Friday, October 2 during Art After Dark. ♦

IN THE SPOTLIGHT

Bruce Everett will have four paintings in the exhibition *Legacy and Loss: Landscapes of the Santa Barbara Region* at the Wildling Museum in Solvang. The exhibition opened on August 21 and runs to February 1, 2016.

Phoebe Brunner's artwork is also included in the Wildling Museum's exhibition, *Legacy and Loss: Landscapes of the Santa Barbara Region*.

John Barnard's two landscape paintings from SLOMA's permanent collection were also requested by the Wildling Museum's curatorial staff and are on loan from SLOMA until *Legacy and Loss: Landscapes of the Santa Barbara Region* ends on February 1, 2016.

Page Graeber exhibited her *Soft & Spicy* watercolors at the Cambria Center for the Arts during August 2015.

Philip Carey's monumental artwork titled “Art Is In My Veins” will be featured in a group exhibition at the Museum of American Visionary Art in Baltimore. The *Big Hope Show* opening on October 3, 2015 “is an original and unabashedly idealistic art exhibition that champions the radiant and transformative power of hope.” The exhibition runs through September 4, 2016. Mr. Carey's artwork chronicles his personal history dealing with life-threatening illnesses. ♦

Send your member news to office@sloma.org

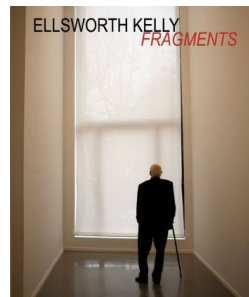
FILMS

All films are shown at the Museum of Art on the third Monday of the month. Suggested donation: \$5 members, \$7 non-members, with a complimentary beverage.

September 21, 7 pm

Ellsworth Kelly: Fragments

65 minutes, English, 2007.



Ellsworth Kelly is widely regarded as one of the most important abstract painters, sculptors, and printmakers working today. Kelly insists on the connection between abstraction and nature from which he extrapolates forms and colors. This film illuminates the true complexity of the artist's work, uncovering early influences that he would return to, reiterate, refine, and re-work for decades to come. ♦

October 19, 7 pm

Kiki Smith: Squatting the Palace

44 minutes, English, 2006.



This film takes a circular approach to an artist who works in overlapping spirals of creative energy. Smith works in her home on the 2nd floor of her East Village townhouse. There, Smith goes from drawing to collaging to modeling clay to painting plaster casts and back, again and again, moving from one discipline to another in a way that may seem aimless to a casual observer, but is actually the modus operandi of a highly sophisticated visual artist. ♦

ADULT CLASSES & WORKSHOPS

Workshops led by professional teaching artists. Sign up online at sloma.org/education or by phone at (805) 543-8562.



Fearless Acrylics and Color Mixing

with David Limrite

September 11 – 13, 2015

9 am – 4 pm

\$325 members, \$375 general. Please register by Friday, September 4. Materials list online.

Increase your confidence and command of painting with acrylics. Working from a model, we will focus on viscosity, brushstroke, applying paint, blending, and loosening up. Those students not interested in working from a live model are encouraged to attend as well. You will be asked to provide your own still life objects, photographs, or sketches to work from. ♦

Drop-In Afternoon Studio Painting

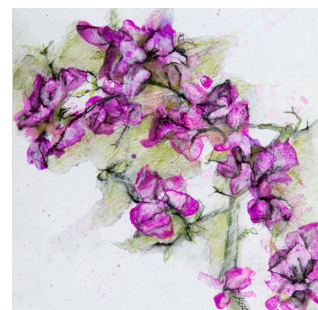
with Kathy Spencer-Canepa

Sundays, October 11, 18, and 25, 2015

1 – 3:30 pm

\$20 members, \$25 general per class. No pre-registration required. All materials included.

Learn to paint expressively with water-based oil or acrylic paint. Students can bring in their own photos or subjects to paint from or use an example provided by the instructor. All experience levels welcome. Ages 16 and up. ♦



Art Wear

with Julie Frankel, Melinda Forbes, and Meg Johnson

October 16 – 17, 2015

Friday night clothing swap and mixer: 6 – 9 pm. Saturday intensive: 9 am – 4 pm.

Registration \$125 members, \$140 general. Materials list online.

Do you an item in your closet that never gets worn? Don't throw it away! Rediscover and reinvent those closet castoffs and thrift store finds. Get inspired, learn surprisingly easy techniques, and work with all kinds of clothing from our in-class clothing swap.

Featured in the successful "Earth Gowns" show at the Steynberg Gallery in SLO, local artists Melinda Forbes, Julie Frankel, and Meg Johnson see the artistic potential in forgotten garments. ♦

Pocket Sketching

with Kath Macaulay

November 13 – 15, 2015

10 am – 4 pm

Registration \$375 members, \$399 general. Includes a set of Pocket Sketching materials. Please register by Friday, October 30.

Learn enough to play for a lifetime! Pocket Sketching is the perfect technique for travel journaling, hiking, biking, sauntering, or sitting in a café. Capture a scene in 25 minutes or less using a water-soluble pen, a pad of paper, and a small paint set. Ideal for the timid beginner to paint fearlessly in public, as well as the advanced artist who wants minimal equipment, total portability, speed, and no clean-up. ♦



Encaustic Sculpture: A Melding of Surface and Form

with Michelle Belto

January 29 – 31, 2016

9 am – 4 pm with breaks

Registration \$425 members, \$450 general. Includes set of materials.

In this workshop students will work three dimensionally using traditional sculpture processes combined with encaustic painting. The focus of this workshop will be to create lightweight armatures using polystyrene foam, foam board, wire, natural and found objects with a variety of skins compatible to wax surface treatments. There will be information and discussion about 3D design and sculptural engineering as well as mixed media encaustic processes and materials. Participants can expect to take home several sample forms or one completed sculpture. ♦

arttrageous After School Art Classes Start in October

BRAINS-ON: The San Luis Obispo Museum of Art aligns its youth art education curriculum to the California State Framework for the Visual and Performing Arts.

Class sizes are limited to 15 students or fewer and taught by experienced teaching artists. Subject matter is designed to help students build higher level thinking skills, with opportunities for students to analyze and make judgements in the field of visual arts.

For complete information on all the After School Art Classes offered by SLOMA go to sloma.org/education/youth-after-school-art-classes.php.

LOCATIONS: SLOMA teaches children at the Museum of Art as well as at the following satellite locations: Ocean View Elementary in Arroyo Grande and San Gabriel Elementary in Atascadero.

ENROLLMENT AND SCHOLARSHIPS: It is the Museum of Art's policy to keep its classes as affordable as possible.

Quality, age appropriate art materials are provided for the diverse, process-oriented instruction.

Full and partial scholarships are given to all children in need. To ask is to receive; no child is ever turned away. Families are simply asked to pay what they can afford. For example, during the past 6 weeks of summer art camps \$2,140 in full or partial scholarships were distributed among 15 children in need.

OCTOBER CLASSES

at the San Luis Obispo Museum of Art, 3:15–4:45 pm

Mondays, 5 to 6 year olds: Fanciful Masks

with teaching artist Madeline Simonaro

Tuesdays, 7 to 8 year olds: Drawing and Painting

with teaching artist Brian Williams

Wednesdays, 9 to 12 year olds: Tessellations in Relief

with teaching artist Brian Williams

at Ocean View Elementary, Arroyo Grande, 3–4:30 pm

Thursdays, Grades 3 thru 6: Expressive Drawing:

Landscapes in Chalk and Oil Pastels

with teaching artist Madeline Simonaro

at San Gabriel Elementary, Atascadero, 3–4:30 pm

Thursdays, Grades 1 thru 3: Sculpture: Work in 3-D!

with teaching artist Rachel Hoxie

NOVEMBER CLASSES

at the San Luis Obispo Museum of Art, 3:15–4:45 pm

Mondays, 5 to 6 year olds: Creative Sculpture

with teaching artist Madeline Simonaro

Tuesdays, 7 to 8 year olds: Papercraft and Bookmaking

with teaching artist Beryl Reichenberg

Wednesdays, 9 to 12 year olds: It's All About Water!

with teaching artist Barbara Rosenthal

at Ocean View Elementary, Arroyo Grande, 3–4:30 pm

Thursdays, Grades 3 thru 6: Patterns and Designs:

Painting in Watercolor

with teaching artist Madeline Simonaro

at San Gabriel Elementary, Atascadero, 3–4:30 pm

Thursdays, Grades 1 thru 3: Natural Landscapes

with teaching artist Rachel Hoxie

TEACHING ARTISTS WANTED

Applicant needs to have:

- basic knowledge of elements and principles of art
- ability to work well with children and/or teens
- ability to plan sequential, process-oriented lesson plans
- knowledge of California visual and performing arts content standards

Send résumé to SLOMA, PO Box 813, SLO, CA 93406

Enroll online at sloma.org/education Youth After School Art Classes or call 543-8562 ext 1

The San Luis Obispo Museum of Art thanks the Janssen Youth Fund & Sports Fund, held at The Community Foundation SLO County; the Rotary Club of San Luis Obispo; Union Bank; Rita's Rainbows; Central Coast Funds for Children; Frame Works; Triology Art Group at Monarch Dunes; and Beth and Bob Mott for their support of the Museum of Art's outstanding youth education program. Their contributions, and those of other interested donors, help keep SLOMA's youth art education accessible for all children in our area.

ARTIST GROUPS

The Painters Group

Sunday, September 20 at 2 pm at Morro Shores Clubhouse, 633 Ramona Avenue, Los Osos is the site of the next TPG meeting. We will review all images submitted for our upcoming *Rhythm and Hues* exhibit. For directions or information, please email flo.bartell@gmail.com or call Flo Bartell, 805-528-7983 or Margaret Bertrand, 805-528-0704. *Rhythm and Hues* will be on display in the McMeen Gallery October 2–November 29, 2015. The opening reception and announcement of merit award winners chosen by juror Tera Galanti will be October 2, 6–9 pm, during Art After Dark. In lieu of a November meeting, we will hold our annual trading card social on **Sunday December 6 at 2:30 pm**. Mark your calendars and watch for details in the next newsletter. ♦

— Flo Bartell and Margaret Bertrand, co-presidents

CC Printmakers

The Central Coast Printmakers had a terrific printing day at their August meeting. Using advanced techniques with old and new plates of intaglio, relief, and collograph all represented, the ten members filled the Rosenthal's studio in a last hurrah for that location.

On Sunday, September 27 at 10 am, the Printmakers will meet in SLOMA's Nybak Wing. There will be a special presentation on New Techniques in Solar Printing. If you would like to participate please pre-register with Evy Justesen: evyjust@gmail.com. Observers are welcome and may drop in any time until 4 pm.

No meeting will be held in October. Let's all enjoy the Open Studios Tour on the second and third weekends. Four of our members are participating: David Butz, May Wilson and Barbara and Rosey Rosenthal. ♦

— Rosey Rosenthal

CC Photographic Society

September 8, 7 pm

Peggy Jansson will give a slide show presentation with infrared images taken in Kauai, Hawaii, and Charleston, South Carolina. She recently had the image sensor of her Nikon D90 converted to infrared photography in which the digital camera is more sensitive to infrared rays than to visible light rays.

October 13, 7 pm

Tony Sweet conducts photography workshops throughout the United States and Canada and is a member of nikSoftware's Team Nik. Peggy Jansson will show his CD presentation entitled "Visual Artistry" at the meeting. He will give SLO Creativity Workshops on November 14 & 15. For more information go to tonysweet.com/seminars. ♦

— BeJae Blake

CC Sculptors Group

California Sculpture SLAM has been monopolizing the group's attention for the past several months.

No meetings are currently scheduled. ♦

CC Craftmakers

Leadership is needed to revitalize this Artist Group. Members who would like to host a meeting or a studio visit can write info@sloma.org and SLOMA's staff will help you reach out. ♦

CALL FOR ARTISTS

Another Way of Keeping a Diary, hosted by SLOMA and sponsored by International Encaustic Artists (IEA), opens on November 20 and goes through January 31, 2016. The exhibition's juror is David Limrite. **Entry deadline is before midnight on September 30, 2015.** Entries must be submitted to the IEA via an EntryThingy link on www.international-encaustic-artists.org. The Gray Wing exhibition is open to all members of IEA or SLOMA and is co-organized by Lola Baltzell and Flo Bartell; curated by Ruta Saliklis. Artwork may be 2D or 3D and must be primarily encaustic, not including cold wax. Work shown previously at SLOMA is not eligible. ♦

Craft Art Market 2015

SLOMA seeks artists who create high quality jewelry, scarves, folk art, handbags, small scale photos, prints, paintings, sculpture, home décor, ceramics, art glass, or other handmade fine craft items. Selected artists will showcase their artwork during the CraftArt Market, an annual boutique of lovingly-made and sometimes whimsical art, held in the Nybak Wing from November 27 through New Year's Eve. All SLOMA members are eligible to apply. **Entry deadline is September 25, 2015 by 5 pm.** Download writable pdf entry at sloma.org home page. ♦

Blue Marble, a national juried exhibition

Blue Marble refers to the spectacular color image of planet Earth taken with NASA's Moderate Resolution Imaging Spectroradiometer. The theme for this exhibition welcomes artists who delve into subjects, themes, and motifs that have to do with our planet. Contemporary original 2D and 3D work in any media, including paintings, prints, drawings, photography, sculpture, and fine craft produced within the last two years is appropriate. 2D work should not exceed 36 inches in the longest dimension. 3D work is limited to 24 inches in the longest dimension and not more than 60 pounds for the whole piece. The exhibition is open to artists living in the United States over the age of 18. **Entry deadline March 19, 2016.** Download writable pdf entry at sloma.org. ♦

San Luis Obispo Museum of Art Mission Statement

Provide and promote diverse visual arts experiences for people of all ages and backgrounds through exhibition, education, creation, and collaboration; and preserve the Museum's permanent collection as an artistic legacy of the California Central Coast.

Museum of Art Board of Directors:

Meets the first Tuesday of every month at 5:30 pm, Nybak Wing. Public welcome.
Betsy Kiser, President
Wendy George, 1st VP
David Coburn, 2nd VP
Roger Carmody, Treasurer
Sharon McConnell, Secretary
Robyn Letters, Past Pres.
Charles Feltman
Bob Mourenza
Theresa Perry
Anneka Scranton

Museum of Art Staff:

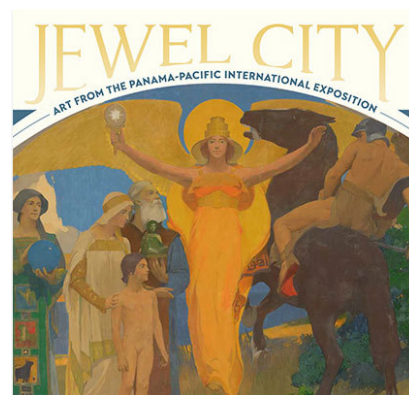
Karen Kile, Executive Director
Ruta Saliklis, Exhibition and Development Director
Wendy R. Walter, Gallery Sales Manager & Registrar
Erica Ellis, Community Engagement Manager
Rebecca Leduc, PR & Social Media
Daniel Solis, Gallery Assistant
Kara Valdon, Web Master
Beth Mott, Youth Education Coordinator
Paula Robinson, Gallery Sales Assistant
José Lemus, PM Life Drawing
Neil Jones, Handyman

ART TRIP

Day Trip to the de Young Museum to tour *Jewel City* Saturday, October 24

2015 marks the centennial of the Panama-Pacific International Exposition (PPIE), the San Francisco world's fair that celebrated the opening of the Panama Canal and the city's reconstruction following the great earthquake of 1906. The grand exposition covered 76 city blocks and boasted international pavilions showcasing innovation, industry, and the arts. *Jewel City: Art from the PPIE* shares examples that signal the key artistic trends of the exposition, from the conservative to the avant-garde. **Highlights of the exhibition include works by Mary Cassatt, John Singer Sargent, James McNeill Whistler, Gustave Courbet, Claude Monet, Camille Pissarro, Auguste Rodin, and Edvard Munch**, many of which were featured in the PPIE pavilions in 1915. Monumental beaux-arts murals designed for the fair will be seen for the first time in nearly a century.

DETAILS // \$125 members, \$140 general includes round trip bus ride, museum admission, and snacks. Convenient pickups in South County, SLO, and Paso Robles. A detailed itinerary will be sent to registered travelers. Purchase your trip by October 20 online at sloma.org or call SLOMA at 805.543.8562. ♦



COMMUNITY EVENT



Free, Fun, Family Day Celebrates Dia de los Muertos Sunday, November 1

In cooperation with Wilshire Hospice Central Coast's special event to celebrate *Dia de los Muertos* in Mission Plaza, SLOMA opens its Nybak classroom for a free, fun Family Day, 11 am to 4 pm. All the materials for *Dia de los Muertos* art activities will be provided by SLOMA's knowledgeable teachers and volunteers. Both events are free and fun for all ages.

Join Wilshire Hospice Central Coast in this unique *Dia de los Muertos* celebration—both reverent and festive—with music, dancing, performers, artist booths, and food in the Mission Plaza.

To reserve an artist booth space or to donate to the art auction, contact dod@wilshirehcs.org. ♦

SAN LUIS OBISPO
museum of art

1010 Broad Street, on the west end of Mission Plaza
PO Box 813, San Luis Obispo, CA 93406
Open 11–5 from Wednesday to Monday
Free admission

THURSDAY PAINTERS

All painters invited. 9 am–Noon with a critique during lunch.
Contact Debby Veldkamp at 801–3617 or Bobby Thompson 528-8861. Bring a chair. Rain cancels.

September & October 2015

Sept. 3: NEW. Bettencourt/Rodriguez Adobe, 1341 Purple Sage Lane, SLO. Lots of places to park on street.

Sept. 10: NEW. OceanPoint, Morro Bay. Off Hwy 1, take Yerba Buena toward ocean, immediate right on Toro Lane. Go to end.

Sept. 17: Coleman Park, Morro Bay (on the North end of the Embarcadero). Boardwalk, dunes, and bay with ocean views.

Sept. 24: See Canyon Fruit Ranch, 2345 See Canyon Road.

Oct. 1: NEW. Harmony township off Hwy 1. Park alongside Harmony Ranch Road. Old buildings, fields and trees.

Oct. 8: Memorial Park, Shell Beach. Go to the end of Seacliff and park. Views of ocean.

Oct. 15: NEW. Mitchell Park, 1445 Santa Rosa St., SLO. Old fashioned neighborhood, deli, and Grace Church.

Oct. 22: Tiber Canyon Ranch, 280 W. Ormande Road, SLO.

Oct. 29: Old Town Gazebo and city park on Short St., A.G. ♦

Non-Profit Org.
U.S. POSTAGE
PAID
San Luis Obispo, CA
Permit Number 68

sloma.org

FOLLOW US ON



Support SLOMA when you shop
at smile.amazon.com

Addressee or Current Resident