

## IN THE GRAY WING

### Another Way of Keeping a Diary November 20, 2015 to January 31, 2016

The Museum of Art, in collaboration with International Encaustic Artists, presents *Another Way of Keeping a Diary*, an international juried exhibition of encaustic paintings. The exhibition, inspired by Picasso's statement that "painting is another way of keeping a diary," will be on view through January 31, 2016.



Sylvia Torres, *The Nest (detail)*, encaustic and collage with handmade papers

In encaustic art, the artist melts and combines resin and pigment paints with molten wax, then fuses each layer with heat. The technique is an ancient one, developed by Greeks to seal their ships. Eventually the functional process of painting with wax and resin became an art medium, and many examples of well-preserved encaustic Egyptian mummy portraits survive today and can be found in museums around the globe. Diego Rivera and Jasper Johns are two well known modern encaustic artists.

After falling out of favor, encaustic painting has gained much momentum and popularity in the past 15 years. Founded in 2005, International Encaustic Artists is the oldest and largest professional membership organization for encaustic art. Members hail from all over the globe: *Another Way of Keeping a Diary* includes the work of members from the United States, Canada, and Germany.

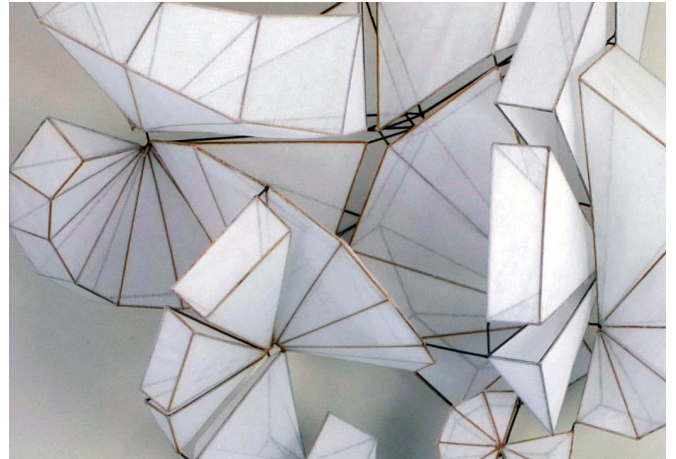
David Limrite, formerly based in LA and recently relocated to Atascadero, was the juror for the exhibition. Join Mr. Limrite for an ARTalk and exhibition tour on Saturday, November 21 at 2 pm, followed by an opening reception from 3 – 5 pm. ♦



international encaustic artists

bringing contemporary vision to an ancient medium

### California Sculpture SLAM 2015 Through November 15



Coleman Pritchard, *A Nude Staircase Descending (detail)*

The third biennial *California Sculpture SLAM* is a unique opportunity to see current works by both established and emerging sculptors on the West Coast scene.

The call for entries inspired an extraordinary collection of sculpture, nearly doubling the number of artist entries from the inaugural *California Sculpture SLAM* in 2011. Ranging from pedestal, to freestanding, to wall-mounted pieces, the 24 works in the exhibition were selected from 201 artists and include designs crafted of metal, wood, stone, glass, and fabric.

The selected artists come from all over the state. Representing the Central Coast are sculptors Isaac Lewin of San Luis Obispo, Patrick Mehaffy of Los Osos, Kevin Porter of Shell Beach, and Robert Schuerman of Paso Robles.

This year's juror, Bella Feldman, has five sculptures on view during *SLAM*.

Join SLOMA and the Central Coast Sculptors Group in celebrating the exhibition at Art After Dark on Friday, November 6 from 6–9 PM. Special thanks to Hearthstone Winery for serving complimentary wine. ♦



Bella Feldman, *Angst 3*

There will be no Art After Dark in December due to the annual Downtown Holiday Parade. Join SLOMA for a special reception for *Another Way of Keeping a Diary*, *Symphony in Sandstone*, and *Off Kilter* on Saturday, December 5 from 3 to 5 PM.



## FIRST GALLERY

### Robert Kennedy: Symphony in Sandstone November 20 to December 31, 2015



Slot canyon formation,  
Navajo Reservation near  
Page, Arizona

Join SLOMA for an exhibition featuring the photography of San Luis Obispo artist Robert Kennedy. Mr. Kennedy has been a professional photographer and instructor of photography at the college level for over fifty years. He has been published in *LIFE*, *National Geographic*, *Sunset*, and many other publications. His work has been exhibited in galleries including the Heard Museum of American Indian Art and History in Phoenix, Arizona.

A reception and opportunity to meet the artist will take place on Saturday, November 21, from 3–5 pm. ♦

## CRAFTART MARKET



Artwork by Alice Sennett

Each year during the Holidays the Nybak Wing transforms into a high-end art gallery boutique sporting a cache of treasures created by local artisans. This year the CraftArt Market celebrates its 28th year with a dazzling array of artful gifts, holiday ornaments, fine jewelry, textiles, home décor, and intricate ceramics.

The CraftArt Market will have a special members-only opening on November 25 and will open to the public from November 27 to December 31. SLOMA will be open daily for CraftArt Market through New Year's Eve from 11am – 5pm. ♦

## FILMS

All films are shown at the Museum of Art on the third Monday of the month. Suggested donation: \$5 members, \$7 non-members, with a complimentary beverage.

**November 16, 7 pm**

**Phillip Johnson: Diary of an Eccentric Architect**  
56 minutes, English, 1996.



Philip Johnson was always on the forefront of stylistic change, and his property in New Canaan, Connecticut, is a kind of laboratory where Johnson was his own best client. This documentary depicts Johnson at work and the importance of the architectural act, the actual construction, and how the buildings interact with their environment — in this case, the autumn leaves or snow of New Canaan. ♦

**December 21, 7 pm**

**A Weaverly Path**  
62 minutes, English, 2011.

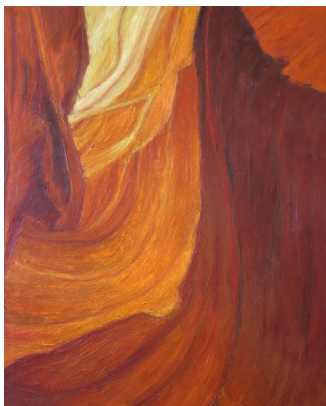


This film offers an intimate, visually stunning portrait of Swedish-born weaver Silvia Heyden and captures the inner dialogue and meditations of an extraordinary artist in the moments of creation. Follow Heyden during a year of weaving and reflection in which she creates works inspired by Durham's Eno River and shares how nature, music, and her life experiences anchor and inform her weaving. ♦

## McMEEN GALLERY

### Rhythm and Hues Through November 29

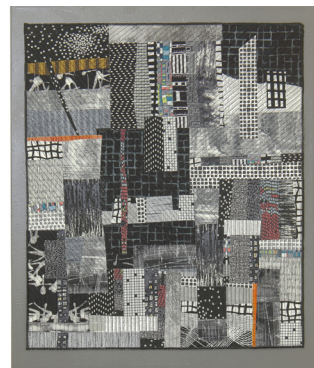
The Painter's Group presents *Rhythm and Hues*, a juried exhibition of paintings in all media. The exhibition juror, Tera Galanti, an associate professor in the Department of Art & Design at Cal Poly, chose the following artworks for Merit Awards: *4 Alarm*, encaustic, by Flo Bartell; *Moving On*, mixed media, by Ellen Jewett; and *Antelope Canyon*, mixed media, by Sandi Heller. ♦



Sandi Heller  
*Antelope Canyon (detail)*

### Off Kilter

**December 4, 2015 to January 31, 2016**



Rene Jennings, *Tokyo After Dark*

SLOMA and the Cutting Edge Fiber Arts Group of SLO County present *Off Kilter*, a collection of innovative contemporary fiber art and art quilts.

Cutting Edge is comprised of fifteen Central Coast artists working with cloth and the quilt form to produce contemporary fiber art. By adding dimension, texture, and personal interpretation to the traditional expression of the quilt, Cutting Edge strives to create individual, imaginative,

and contemporary fiber art and art quilts.

Enjoy an ARTalk and exhibition tour with Cutting Edge fiber artist Jeanne Aird on Saturday, December 5 at 2 pm, followed by an opening reception and opportunity to meet the artists of *Off Kilter* from 3 – 5 pm. ♦

## ADULT CLASSES & WORKSHOPS

Workshops led by professional teaching artists. Sign up online at [sloma.org/education](http://sloma.org/education) or by phone at (805) 543-8562.



### Encaustic Sculpture: A Melding of Surface and Form

with *Michelle Belto*

**January 29 – 31, 2016**

9 am – 4 pm

Registration \$425 members, \$450 general. Includes set of materials.

In this workshop students will work three dimensionally using traditional sculpture processes combined with encaustic painting. The focus of this workshop will be to create lightweight armatures using polystyrene foam, foam board, wire, natural and found objects with a variety of skins compatible to wax surface treatments. Participants can expect to take home several sample forms or one completed sculpture. ♦

### Painters Start Here !

with *Catherine Lemoine*

**March 12 – 13, 2016**

12 pm – 3 pm

Registration \$40 members, \$50 general. Materials list available online.

Let nature be your guide in this introduction to painting with Central Coast artist Catherine Lemoine. Enjoy two days of color, information, smiles, and laughter as you learn how to unleash your inner artist. This workshop is a great opportunity for new artists to create using inexpensive, easy-to-find materials in a relaxing atmosphere. ♦



### The Art of Calligraphy

with *Victoria Johnson*

**April 16 – 17, 2016**

12 pm – 3 pm

Registration \$120 members, \$140 general. Materials list available online.

Master Calligrapher Victoria Johnson is the "Calligrapher to the Stars." Victoria will share the timeless and practical uses for calligraphy using a variety of letters and styles. Learn the basics of calligraphy, copperplate, and Italic, and gain insight in how to work with different kinds of papers, gouache, making your own envelopes, inks, and fonts. Instruction will be individually tailored as Victoria works with each student. ♦

### Your Brush for All It's Worth: Brushwork Intensive

with *Guy Kinnear*

**April 23 – 24, 2016**

9 am – 4 pm

Registration \$210 members, \$225 general. Materials list available online.

There are over 1,000 marks hidden in each brush. The broader a vocabulary of mark the artist has, the greater the sophistication of his or her work. In this open media workshop, you will experiment with exercises derived from the Sumi-E to unlock the unlimited options hidden in the bristles of your brushes. Skills are applicable to landscape, figurative, and still life works. ♦



### Landscape Painting

with *Libby Tolley*

**May 12 – 15, 2016**

9 am – 4 pm

\$445 members, \$475 general. Please register by Friday, May 5, 2016.

This 4-day workshop will focus on creating studio paintings from reference material with the goal of capturing a sense of place in natural light. Students will work on location making color studies and take these studies indoors to use as reference material. In the studio, artists will create larger paintings from the studies and reference photos. Design, color, palette organization, and direct and indirect painting will be explained and put into practical application. ♦



# arttrageous After School Art Classes

**BRAINS-ON:** The San Luis Obispo Museum of Art aligns its youth art education curriculum to the California State Framework for the Visual and Performing Arts.

Class sizes are limited to 15 students or fewer and taught by experienced teaching artists. Subject matter is designed to help students build higher level thinking skills, with opportunities for students to analyze and make judgements in the field of visual arts.

**For complete information on all the After School Art Classes offered by SLOMA go to [sloma.org/education/youth-after-school-art-classes.php](http://sloma.org/education/youth-after-school-art-classes.php).**

**LOCATIONS:** SLOMA teaches children at the Museum of Art as well as at the following satellite locations: Ocean View Elementary in Arroyo Grande and San Gabriel Elementary in Atascadero.

**ENROLLMENT AND SCHOLARSHIPS:** It is the Museum of Art's policy to keep its classes as affordable as possible.

Quality, age-appropriate art materials are provided for the diverse, process-oriented instruction.

Full and partial scholarships are given to all children in need. To ask is to receive; no child is ever turned away.

Families are simply asked to pay what they can afford. For example, during the past 6 weeks of our 2015 summer art camps, \$2,140 in full or partial scholarships were distributed among 15 children in need.

## NOVEMBER 2015 CLASSES

**San Luis Obispo Museum of Art, 3:15–4:45 pm**

**Mondays, 5 to 6 year olds: Creative Sculpture** with teaching artist Madeline Simonaro

**Tuesdays, 7 to 8 year olds: Papercraft and Bookmaking** with teaching artist Beryl Reichenberg

**Wednesdays, 9 to 12 year olds: It's All About Water!** with teaching artist Barbara Rosenthal

**Ocean View Elementary, Arroyo Grande, 3–4:30 pm**

**Thursdays, Grades 3 thru 6: Patterns and Designs: Painting in Watercolor** with teaching artist Madeline Simonaro

**San Gabriel Elementary, Atascadero, 3–4:30 pm**

**Thursdays, Grades 1 thru 3: Natural Landscapes** with teaching artist Rachel Hoxie

**After school classes will resume in February 2016. Please visit [sloma.org/education](http://sloma.org/education) for class schedules and descriptions.**

## Just For Teens: Figure Drawing with Jan French Saturdays, February 20, 27, and March 5, 2016

**1 – 4 PM in SLOMA classroom.**

Registration \$90 members, \$100 general.

Teen artists will gain a basic, classical understanding of various drawing media, rendering techniques, and visual perception by using the human figure as the subject. Artists will draw from sculpture, each other, and a live model and will also have the opportunity to reference currently popular media figure representations such as video games and comics. Learn new skills and build an artist portfolio.

Class size limited to 15 students. All materials included. ♦



.....

Enroll online at [sloma.org/education](http://sloma.org/education) Youth After School Art Classes or call 543-8562 ext 1

*The San Luis Obispo Museum of Art thanks the Janssen Youth Fund & Sports Fund, held at The Community Foundation SLO County; the Rotary Club of San Luis Obispo; Union Bank; Rita's Rainbows; Central Coast Funds for Children; Frame Works; The Sharkey Foundation, Trilogy Art Group at Monarch Dunes; and Beth and Bob Mott for their support of the Museum of Art's outstanding youth education program. Their contributions, and those of other interested donors, help keep SLOMA's youth art education accessible for all children in our area.*

## ARTIST GROUPS

### The Painters Group

Thank you to our TPG members and other SLOMA artists who helped make *Rhythm and Hues* a successful exhibit. We overflowed the McMeen with paintings selected by our juror, Tera Galanti, Associate Professor of Art & Design at Cal Poly. Many thanks for your work Tera.

Congratulations to Sandi Heller, Ellen Jewett, and Flo Bartell for receiving the three Merit Awards. The exhibit will be on display through the end of November. ♦

— Flo Bartell and Margaret Bertrand, co-presidents

### CC Printmakers

There is no news from the Printmakers Group at this time. ♦

— Rosey Rosenthal

### CC Photographic Society

**November 10, 7 pm, Nybak Wing**

Dorothy Cutter will present a slide show from a winter trip to Yellowstone National Park and the Tetons taken in late January. The roads in the Tetons were empty, she said, and she felt like she had the whole area to herself. The waterfalls were quite challenging to photograph, but when she did get a shot, it was a success. "Although the areas you can get to are limited, what you do see is amazing!"

There will be no program meeting in December. ♦

— BeJae Blake

### CC Sculptors Group

Our Gray Wing exhibition, *California Sculpture SLAM*, has been a great success and will continue until November 15. Hearthstone Estate Winery will again pour their wines for all to taste at Art After Dark on November 6. Thanks to Hearthstone for their generous support.

On Saturday, December 5, CCSG will hold a pot luck dinner and meeting at the home of Mike and Leslie Hannon, 665 Vetter Road in Arroyo Grande, beginning at 4 pm. Please call Leslie at 489-8400 to tell her what you plan to bring. This will be an important meeting and we hope all will come.

Happy Holidays to all. ♦

—CCSG

### CC Craftmakers

Teresa Perry and Kate Froman are your new co-chairs. Our gratitude to Crissa Hewitt and Terri Mc Arthur who have carried most of the load for Craftmakers for a long time.

We are pleased and excited to announce that we have three Craftmaker exhibits scheduled at SLOMA over the next two years: two shows in the McMeen Gallery (October 7, 2016 – to November 27, 2016 and another in 2017) and an exhibition in the Gray Wing at the end of 2017. You will be hearing much more about these exhibits soon. ♦

### Teaching Artists Wanted

Applicant needs to have:

- basic knowledge of elements and principles of art
- ability to work well with children and/or teens
- ability to plan sequential, process-oriented lesson plans
- knowledge of California visual and performing arts content standards

Send résumé to SLOMA, PO Box 813, SLO, CA 93406 ♦

## IN THE SPOTLIGHT

**Patti Sullivan** will have an exhibit of her art at Linnaea's Café through November. She also has her art on two book covers: a poetry journal, *LUMMOX 4*, and a book of poems by Canadian poet, James Deahle, *Unbroken Lines*.

**Jim Tyler's** pastel painting, *Tulum Seascape*, will be featured in the April 2016 issue of *Pastel Journal*, receiving an Honorable Mention in the Pastel 100 competition. The painting recently won a \$500 in-kind award at the Pastel Society of the West Coast's *Pastels USA* show at the Haggin Museum in Stockton.

**Bruce Everett's** painting *Dry Creek in Hog Canyon* has been included in Santa Paula Art Museum's exhibit, *Art About Agriculture*, from November 14 to January 31, 2016. ♦

Send your member news to [office@sloma.org](mailto:office@sloma.org)

## CALL FOR ARTISTS

**Aquarius, a Pacific Regional Water Media Exhibition** will be held at SLOMA from February 5 to March 27, 2016.

The juror, Chris Van Winkle, is a California artist with roots in Canada. Exhibition prospectus and entry forms are available on the Central Coast Watercolor Society's website, [CCWSart.com](http://CCWSart.com).

**Entry deadline November 15, 2015.** Please contact [diannj@gmail.com](mailto:diannj@gmail.com) with any questions. ♦

**Blue Marble, a national juried exhibition**

*Blue Marble* refers to the spectacular color image of planet Earth taken with NASA's Moderate Resolution Imaging Spectroradiometer. The theme for this exhibition welcomes artists who delve into subjects, themes, and motifs that have to do with our planet. Contemporary original 2D and 3D work in any media produced within the last two years is appropriate. 2D work should not exceed 36 inches in the longest dimension. 3D work is limited to 24 inches in the longest dimension and not more than 60 pounds for the whole piece. The exhibition is open to artists living in the U.S. over the age of 18. **Entry deadline March 19, 2016.** Download writable pdf entry at [sloma.org](http://sloma.org). ♦

### San Luis Obispo Museum of Art Mission Statement

*Provide and promote diverse visual arts experiences for people of all ages and backgrounds through exhibition, education, creation, and collaboration; and preserve the Museum's permanent collection as an artistic legacy of the California Central Coast.*

#### Museum of Art Board of Directors:

*Meets the first Tuesday of every month at 5:30 pm, Nybak Wing. Public welcome.*

Betsy Kiser, *President*

Wendy George, *1st VP*

David Coburn, *2nd VP*

Roger Carmody, *Treasurer*

Sharon McConnell, *Secretary*

Robyn Letters, *Past Pres.*

Shannon Bates

Charles Feltman

Bob Mourenza

Theresa Perry

Anneka Scranton

#### Museum of Art Staff:

Karen Kile, *Executive Director*

Ruta Saliklis, *Exhibition and*

*Development Director*

Wendy R. Walter, *Gallery Sales*

*Manager & Registrar*

Erica Ellis, *Community*

*Engagement Manager*

Rebecca Leduc, *PR & Social Media*

Daniel Solis, *Gallery Asst.*

Beth Mott, *Youth Education*

*Coordinator*

Paula Robinson, *Gallery Sales Asst.*

Abby Belknap, *AM Life Drawing*

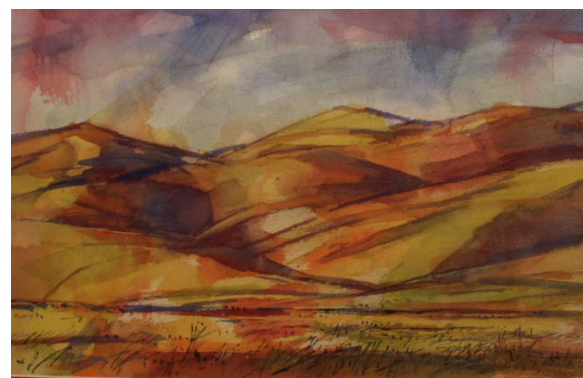
José Lemus, *PM Life Drawing*

Neil Jones, *Handyman*

## ART TRIP

### Visit Solvang's Wildling & Elverhøj Museums Wednesday, December 9

SLOMA and the SLO History Center combine efforts to provide an all-day excursion to Solvang. We'll tour the Wildling Museum's exhibition *Legacy and Loss: Landscapes of the Santa Barbara Region*—illustrating the development of the tri-county area and celebrating local wilderness and natural regions conserved as open space. Historic artists include Ray Strong and Channing Peake. Contemporary artists include John Barnard, Bruce Everett, Phoebe Brunner and Bill Dewey. Artworks from SLOMA's permanent collection and the SLO History Center were borrowed for this exhibition. There will be time to visit the Elverhøj Museum of History and Art, with time on your own to have lunch and shop in downtown Solvang. Tickets \$60 SLOMA/History Center members, \$75 general. Includes round trip transportation and museum tours. Itineraries will be sent to travelers. ♦



John Barnard, *Carrizo Plains*, watercolor, on loan from SLOMA's permanent collection

## CONCERT



### Carl Sonny Leyland "...best boogie woogie pianist on the planet." Sunday, January 24, 2016 at 3 PM

Don't miss an opportunity to enjoy Carl Sonny Leyland playing boogie woogie on SLOMA's Steinway! Born in the south of England, transported to New Orleans, and now living in Cuyama, this multi-talented piano player is usually wowing the crowds, and other musicians, at world-wide jazz festivals. On Sunday, January 24, 3 pm, he brings his astonishing technique and mastery of the piano, and his soulful and expressing singing, to the Museum of Art. Carl Sonny Leyland's playing of vintage music—mostly boogie woogie to traditional jazz—displays an infectious spontaneity, providing a musical joyride through American roots music. The hour-long concert will be followed by refreshments and an opportunity to visit with the artist.

Tickets are \$20 for general seating and can be purchased online at [sloma.org](http://sloma.org) or by phone. ♦

SAN LUIS OBISPO  
**museum of art**

1010 Broad Street, on the west end of Mission Plaza  
PO Box 813, San Luis Obispo, CA 93406  
Open 11–5 from Wednesday to Monday  
Free admission

### THURSDAY PAINTERS

All painters invited. 9 am–Noon with a critique during lunch.  
Contact Debby Veldkamp at 801-3617 or Bobbye Thompson 528-8861. Bring a chair. Rain cancels.

### November & December 2015

**Nov. 5:** NEW! The Raminha Ranch, 2490 Toro Creek Road, Morro Bay.

**Nov. 12:** NEW! David Bauer's home, 6475 Mira Cielo, SLO. Many views of vineyards, gardens and surrounding mountains.

**Nov. 19:** Dinosaur Rocks Park, Shell Beach.

**Nov. 26:** Happy Thanksgiving!

**Dec. 3:** Christmas party at Old School House in Los Osos. Potluck lunch and gift exchange.

**Dec. 10:** Botanical Gardens at Chorro Park, SLO.

**Dec. 17:** SLO Train Station, 101 Railroad Avenue, historic neighborhood and stores in the area.

**Dec. 24 & 31:** Merry Christmas and Happy New Year! ♦

Non-Profit Org.  
U.S. POSTAGE  
PAID  
San Luis Obispo, CA  
Permit Number 68

**sloma.org**

FOLLOW US ON



Support SLOMA when you shop  
at [smile.amazon.com](http://smile.amazon.com)

Addressee or Current Resident