



CURRICULUM GUIDE

THE SECRET PLACE

October 11, 2025 – February 22, 2026

A FEW HELPFUL FAQS BEFORE WE JUMP IN...

What is an exhibition curriculum guide?

An Exhibition Curriculum Guide is a resource designed to help parents and educators engage children and students with the themes and artworks featured in our museum exhibition. It provides background information, discussion questions, and activities that align with the exhibition's content. The guide serves as a bridge between the museum experience and classroom or home learning, with the goal of enriching the overall experience of the museum visit!

Who is this guide for?

This guide can be used by anyone but is primarily intended for parents and educators who want to enhance the learning experience of children or students. It is perfect for families visiting museums together, teachers looking for classroom resources that complement the museum's exhibition, or homeschoolers wanting to integrate museum visits into their lesson plans. The activities and questions are adaptable for a variety of age groups and learning levels, ensuring that all visitors can engage with the exhibition in a meaningful way.

What is the best way to use this guide?

The Exhibition Curriculum Guide can be used in several ways, depending on your needs:

1. **Before the Visit:** Use the guide as an introduction to the exhibition. Review the themes, key artworks, and questions to help prepare children or students for what they will see. This can spark curiosity and anticipation.
2. **During the Visit:** Bring the guide with you to the museum and use it to direct attention to specific pieces or concepts. The discussion questions and activities can be used to guide conversations or observations as you explore the exhibition.
3. **After the Visit:** Once you've returned home or to the classroom, use the follow-up activities and reflection questions to reinforce learning, encourage further exploration, and discuss what was seen. This can also help students or children retain what they learned and express their thoughts creatively.

EXHIBITION CURRICULUM GUIDE

Artist Name:

Siji Krishnan

Exhibition:

The Secret Place

Dates:

October 11, 2025 – February 22, 2026



CONTEXT

ARTIST BACKGROUND



SIJI KRISHNAN

- Siji Krishnan is a contemporary artist from Kerala, India whose paintings often explore memory, imagination, and belonging. Kerala is on the southwestern part of India, known for its beautiful marshlands and monsoon climate.
- She sometimes works on rice paper, a very thin and delicate material that gives her paintings a soft, almost dreamlike quality. She also paints on canvas.
- Krishnan's paintings encourage slow looking: the more time you spend with them, the more details and layers you notice.

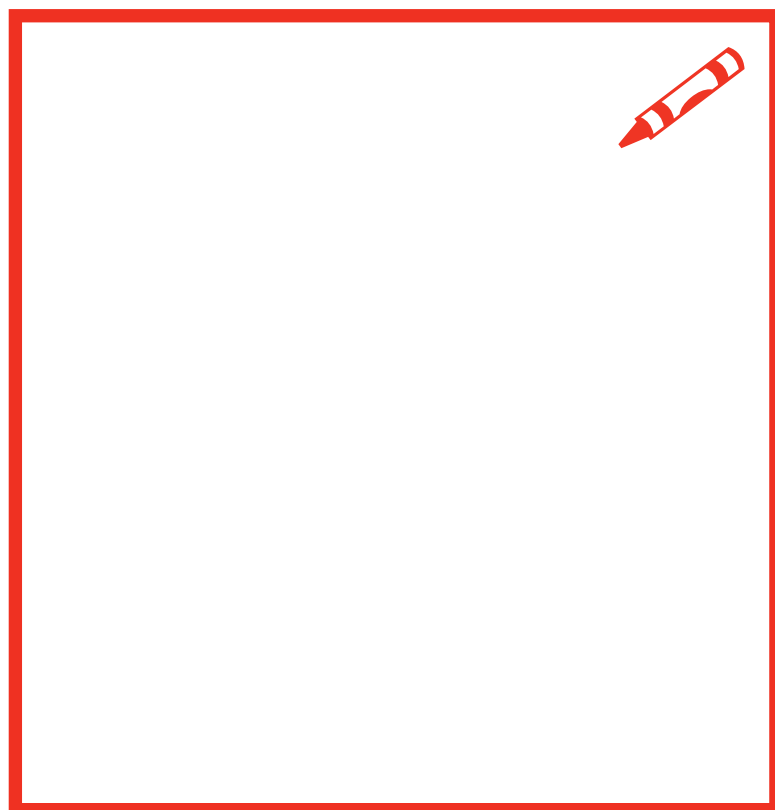


CONTEXT

ELEMENT OF FOCUS



- The element of focus in Siji Krishnan's curriculum is Texture. Siji Krishnan makes works on canvas, and often adds thin layers of rice paper over the canvas to create a translucent layer on the canvas, adding depth to her work.
- Texture is the way something feels or looks like it would feel. It can be actual (bumpy, smooth, rough, soft — things you can touch with your hand) or visual (when an artist makes it look like a surface has a certain feeling, even if the artwork is flat).
- In Siji Krishnan's paintings, the thin rice paper and gentle washes of color create a delicate texture. The surface looks soft, fragile, and layered — almost like skin, cloth, or mist.
- Place this paper over a textured surface (wood, leaf, fabric, coin). Rub with the side of a crayon or pencil to see the pattern appear:



RESPONDING

KEY WORKS



Pond, 2023, Watercolor on rice paper pasted on canvas



Pond, 2023, detail



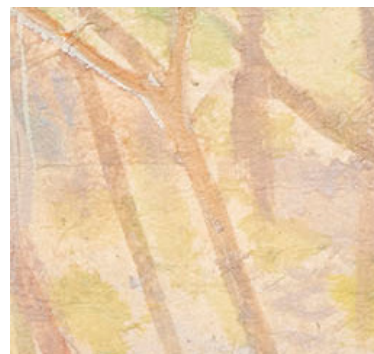
Pond, 2023, detail



Pond, 2023, detail



Pond, 2023, detail



Pond, 2023, detail

QUESTIONS TO CONSIDER

1. What is going on in this painting?
2. What colors do you notice? Are there shades of different colors?
3. What kind of place does this seem to be?

RESPONDING

KEY WORKS



Hollowness, 2024, Oil on canvas, detail



Hollowness, 2024, detail



Hollowness, 2024, detail



Hollowness, 2024, detail



Hollowness, 2024, detail

QUESTIONS TO CONSIDER

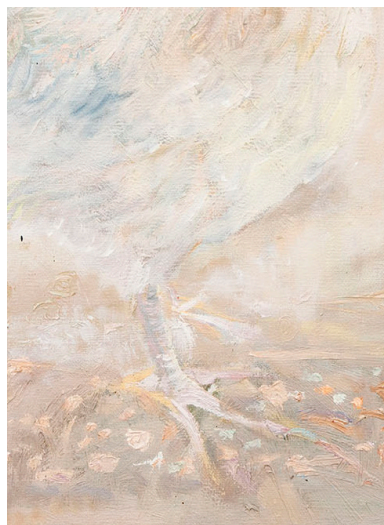
1. What do you notice in this painting?
2. What different kinds of textures show up? Are there any figures in this painting?
3. Do the bright white lines remind you of anything from real life?
4. What does the title of the piece bring up for you?

RESPONDING

KEY WORKS



Kozhipennu, 2022-23, detail



Kozhipennu, 2022-23, detail



Kozhipennu, 2022-23, detail



Kozhipennu, 2022-23, detail



Kozhipennu, 2022-23, detail



Kozhipennu, 2022-23, Oil on canvas

QUESTIONS TO CONSIDER

1. What do you see in this photo? What is there that isn't in the other two paintings we have looked at?
2. Do you notice any other textures on the surface of the painting?
3. How does this painting make you feel?

RESPONDING KEY WORKS



Along the Wind, 2025, Watercolor on rice paper



Along the Wind, 2025, detail



Along the Wind, 2025, detail



Along the Wind, 2025, detail

QUESTIONS TO CONSIDER

1. What movement or energy do you notice in this painting?
2. Are there any humans in this work?
3. What connections can you make between this painting and the painting *The Pond*?

CONNECTING YOUR WORLD



Two friends detail 2024, Oil on canvas

QUESTIONS FOR STUDENTS: AGES 5 - 7

1. Pick one thing to notice more of in Siji Krishnan's paintings.
2. If the person or animal in Siji Krishnan's paintings could talk, what do you think they might say?

QUESTIONS FOR STUDENTS: AGES 8 - 10

1. How does the artist make her figures look like they are part of the background or landscape?
2. What story do you think these artworks is telling about home or family?

QUESTIONS FOR STUDENTS: AGES 11 - 13

1. The figures sometimes seem to appear and disappear at the same time.
What do you think this shows about memory or imagination?
2. How does the artist's choice of materials (like thin paper and soft colors) affect how the artwork feels to you?

QUESTIONS FOR STUDENTS: AGES 14 - 18

1. Krishnan's figures often hover between the real and the imagined.
How does this blur between reality and memory shape the meaning of her work?
2. In what ways do her paintings invite you to think about identity, belonging, or the passage of time?

CREATING YOUR TURN!



ACTIVITY FOR STUDENTS: ALL AGES

1. Distribute materials to students and have them draw a place or person who has made a difference in their life.
2. Students can use the kneaded eraser to erase mistakes or to add highlights by erasing some color drawn on with pastels

MATERIALS

- Translucent paper and rice paper
- Pastel pencils
- Blending nubs
- Kneaded eraser
- Pencil sharpener

POP OUT!

- Join us every Saturday at 11am for a free docent tour!
- Visit SLOMA every Second Saturday from 11am to 1pm for a free, all-ages art activity!
- Interested in a field trip to SLOMA? Learn more about free school and group tours at [SLOMA.org/visit/tours](https://www.slo.org/visit/tours) to schedule yours today!

Link to *The Secret Place* exhibition page and Artist Walkthrough: [HERE](#)

Link to order classroom materials: [HERE](#)

The Secret Place is generously presented by:



LINDSEY HARN
GROUP

CHRISTIE'S
INTERNATIONAL REAL ESTATE
SERENO

EVERY PAGE
FOUNDATION

Additional support provided by:



HOTEL
SAN LUIS
OBISPO



SAN LUIS OBISPO
museum OF **art**

1010 BROAD STREET *at Mission Plaza*
SAN LUIS OBISPO, CALIFORNIA 93401
PH 805.543.8562 | FX 805.543.4518

SLOMA.ORG